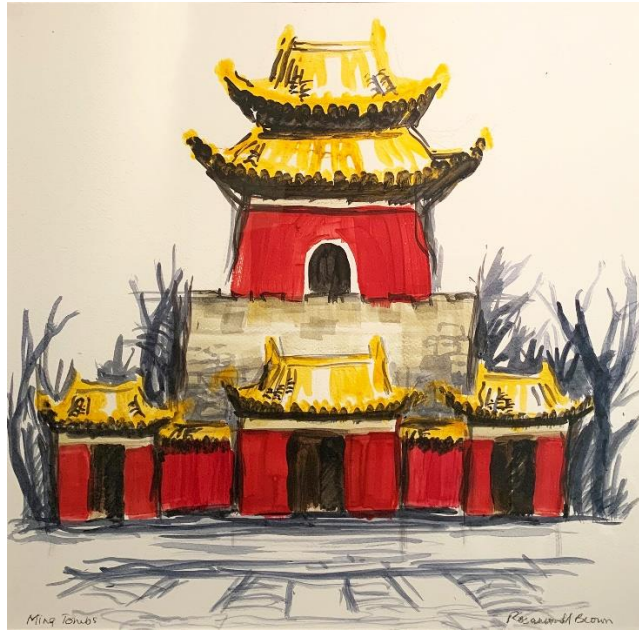


BEN BROWN FINE ARTS



Rosamond Brown, *Ming Tombs*, c. 2020, watercolour on paper, 48 x 48cm (18 7/8 x 18 7/8 in.)

ROSAMOND BROWN: Reflections in isolation

15 May – 15 August 2020

The Hong Kong Club

1 Jackson Road, Central, Hong Kong

Ben Brown Fine Arts Hong Kong is thrilled to present a solo exhibition of Rosamond Brown's watercolours at the legendary Hong Kong Club in Central, Hong Kong. Echoing her first retrospective exhibition at the Hong Kong Club in 2001, the current exhibition showcases a series of 14 watercolours depicting lyrical, semi-abstract landscapes of Australia, China, Italy and Russia. Rosamond's meditative landscapes are composed of swathes of colour gently washing into one another, aligning her with Western post-war Abstract Expressionists and Colour Field painters, while her immersion in Asia and direct exchange with Chinese artists bring elements of Zen and calligraphic precision to her work.

Born in 1937 in the United Kingdom, Rosamond arrived in Hong Kong in 1964 and has lived and worked here since, her work widely exhibited in prominent institutions, including the acclaimed presentation at Ben Brown Fine Art's 2019 Art Basel Hong Kong Kabinett section. Upon her arrival, Rosamond forged a bridge between Eastern and Western artists in Hong Kong, joining the local avant-garde, which included artists Hon Chi-fun, Gaylord Chan and Cheung Yee, and collaborating on group exhibitions and exchanging ideas and artistic approaches.

BEN BROWN FINE ARTS

An additional group of watercolours will be on view at Ben Brown Fine Arts' new exhibition space in Wong Chuk Hang, Hong Kong. Works from both venues are available for sale with half of the proceeds to be donated to charities designated by the artist.

The exhibition is open to all members of the Hong Kong Club, while non-members must be accompanied by members or may contact us for further information. The Hong Kong Club imposes a strict limit of 3 guests per member and requires completion of health declaration forms, temperature checks and wearing of face masks in order to enter the premises.

About the Artist

Rosamond Brown, born in 1937 in the United Kingdom, arrived in Hong Kong in 1964 and has lived and worked here since, her work widely exhibited in prominent museums and institutions. Upon her arrival, Rosamond forged a bridge between Eastern and Western artists in Hong Kong, joining the local avant-garde, including artists Hon Chi-fun, Gaylord Chan and Cheung Yee, collaborating on group exhibitions and exchanging ideas and artistic approaches. Rosamond held solo exhibitions in 1964 and 1966 at the pivotal Chatham Gallery, Hong Kong's first permanent exhibition space for artists. In 1978, Rosamond had a solo exhibition at the British Embassy in Beijing, marking the first exhibition of contemporary Western art in post-Cultural Revolution China, drawing curious artists and dignitaries who were staggered by her semi-abstraction and loose-brushed painting techniques. Her work has been exhibited at the Hong Kong Arts Centre; The Hong Kong Museum of Art; Fukuoka Art Museum, Japan; and Seoul Metropolitan Museum of Art, Korea. Rosamond studied at Belgrade University, Yugoslavia, and Central School of Art and Design (now Central Saint Martins), London, and has taught at Hong Kong University.

For further press information and enquires please contact:

Ben Brown Fine Arts
Juliana Chan
T. +852 2522 9600
E. juliana@benbrownfinearts.com
W. www.benbrownfinearts.com

Find us @benbrownfinearts
#benbrownfinearts #rosamondbrown
#refelctionsinisolation

