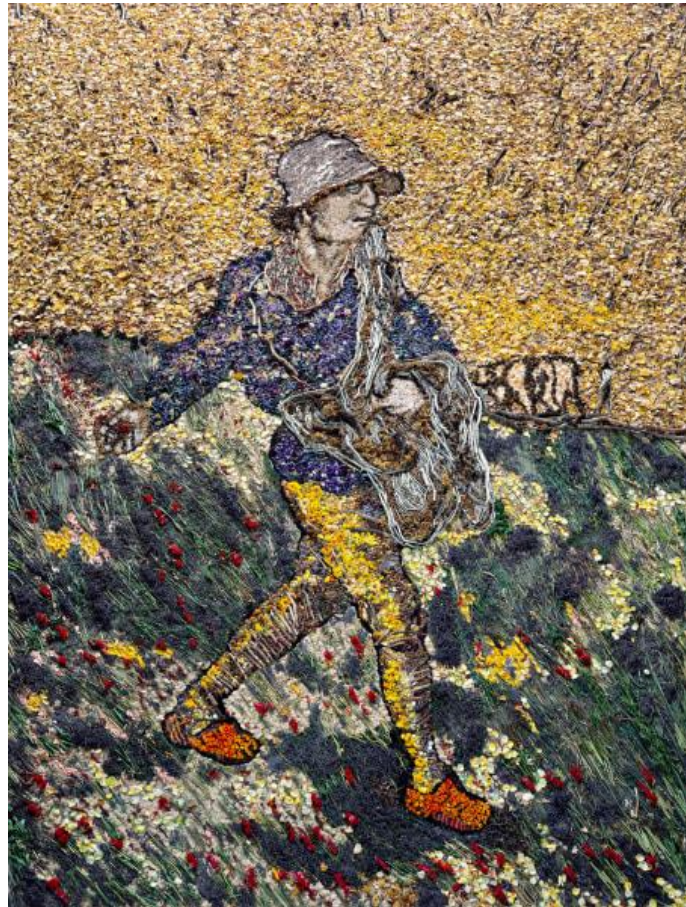


BEN BROWN FINE ARTS



Vik Muniz, *The Sower, after Van Gogh*, 2011, Digital C-print 237.5 x 180.3 cm. (93 1/2 x 71 in.)

NEW FRONTIERS: MOVEMENTS IN CONTEMPORARY ART

21 February – 16 April 2023
Claridge's ArtSpace, Brook's Mews, London, W1K 4HR

Ben Brown Fine Arts invites art lovers to explore *New Frontiers: Movements in Contemporary Art*, a thought-provoking exhibition presented at **Claridge's ArtSpace** in London, in the heart of Mayfair. This exhibition will be held concurrently with the launch of **Claridge's ArtSpace Café**.

New Frontiers celebrates the unique visions and powerful messages of great contemporary artists from the gallery, including: **Gavin Turk's** luminous *Port (Yellow)* (2012), offering a spiritual journey through the imagination; an intensely textured, semi-abstract seabed painting by **Miquel Barceló**; **Vik Muniz's** meticulous rendering of Piet Mondrian's *Mill in Sunlight (Pictures of Pigment)* (2006); grandiose libraries from **Candida Höfer**; powerful abstract, calligraphic paintings by **José Parlá**; and a whirlpooled labyrinth of unique, mirror polished stainless steel tables by **Ron Arad**, among other special pieces.

BEN BROWN FINE ARTS

New Frontiers: Movements in Contemporary Art will be exhibited at Claridge's ArtSpace in London from 21 February to 16 April 2023. Simultaneously *Awol Erizku: Cosmic Drill* will be on view at Ben Brown Fine Arts' London gallery at 12 Brook's Mews until 6 April 2023. Claridge's, the legendary hotel in the heart of Mayfair, unveiled Claridge's ArtSpace in 2021.

Designed by John Pawson, Claridge's ArtSpace is accessed by an entrance on the newly restored Claridge's façade on Brook's Mews. Claridge's ArtSpace stages exhibitions with international galleries and artists, celebrating a multidisciplinary programme which is open for free to the public.

ABOUT BEN BROWN FINE ARTS

In 2004, Ben Brown Fine Arts opened its first location in the heart of Mayfair, London. The gallery quickly established itself on the international art scene with exhibitions of long-term gallery artists Candida Höfer, Tony Bevan, Claude & François-Xavier Lalanne, and Heinz Mack, amongst others, as well as momentous exhibitions of 20th-century masters including Lucio Fontana, Alighiero Boetti and Gerhard Richter. In 2009, Ben Brown Fine Arts opened an exhibition space in Hong Kong, becoming the first international gallery to move to the city that would soon become a major international art hub. In Hong Kong, the gallery introduced notable exhibitions of Pablo Picasso, Sean Scully, Frank Auerbach, and Miquel Barceló, as well as survey exhibitions of Chinese contemporary photography, the Düsseldorf School of Photography, 20th-century Italian art, and the ZERO movement. In 2021, Ben Brown Fine Arts opened a third location in Palm Beach, Florida, with an inaugural exhibition celebrating the legacy of American and European 20th-century artists who developed radical approaches to making art, among them Alexander Calder, Georg Baselitz, and Andy Warhol. The galleries regularly exhibit and develop programming for our renowned stable of international, multi-disciplinarian contemporary artists, including the aforementioned as well as Yoan Capote, Awol Erizku, Nabil Nahas, José Parlá, Enoc Perez, Ena Swansea, Hank Willis Thomas, Gavin Turk, and Jan Worst. With multi-lingual staff based in London, Hong Kong, New York, and Palm Beach, the gallery has strong relationships with private collectors, advisors, and public institutions, sourcing and placing important primary and secondary artworks for them. Ben Brown Fine Arts participates in major art fairs worldwide, including Art Basel, Art Basel Hong Kong, Art Basel Miami Beach, The Armory Show, Frieze Masters and TEFAF New York.

Instagram: @benbrownfinearts

Facebook: /BenBrownFineArts

Twitter: @BenBrownFineArt

ABOUT CLARIDGE'S ARTSPACE

Claridge's ArtSpace is a newly created gallery unveiled at the legendary hotel in the heart of Mayfair in 2021. This space, designed by John Pawson, is accessed by the recently launched Claridge's Art Space Café on the restored hotel façade on Brooks Mews. Claridge's invites its long-standing friends and gallerists within the art world to stage rotating exhibitions and shows, and has approachability at its core, with free access to all.

For sales enquiries please contact:

sales@benbrownfinearts.com

www.benbrownfinearts.com

+44 (0)20 7734 888

For all communications enquiries please contact:

Katy Wickremesinghe: katy@ktwlondon.com

Tani Burns: tani@ktwlondon.com

+44 (0) 7888 731419